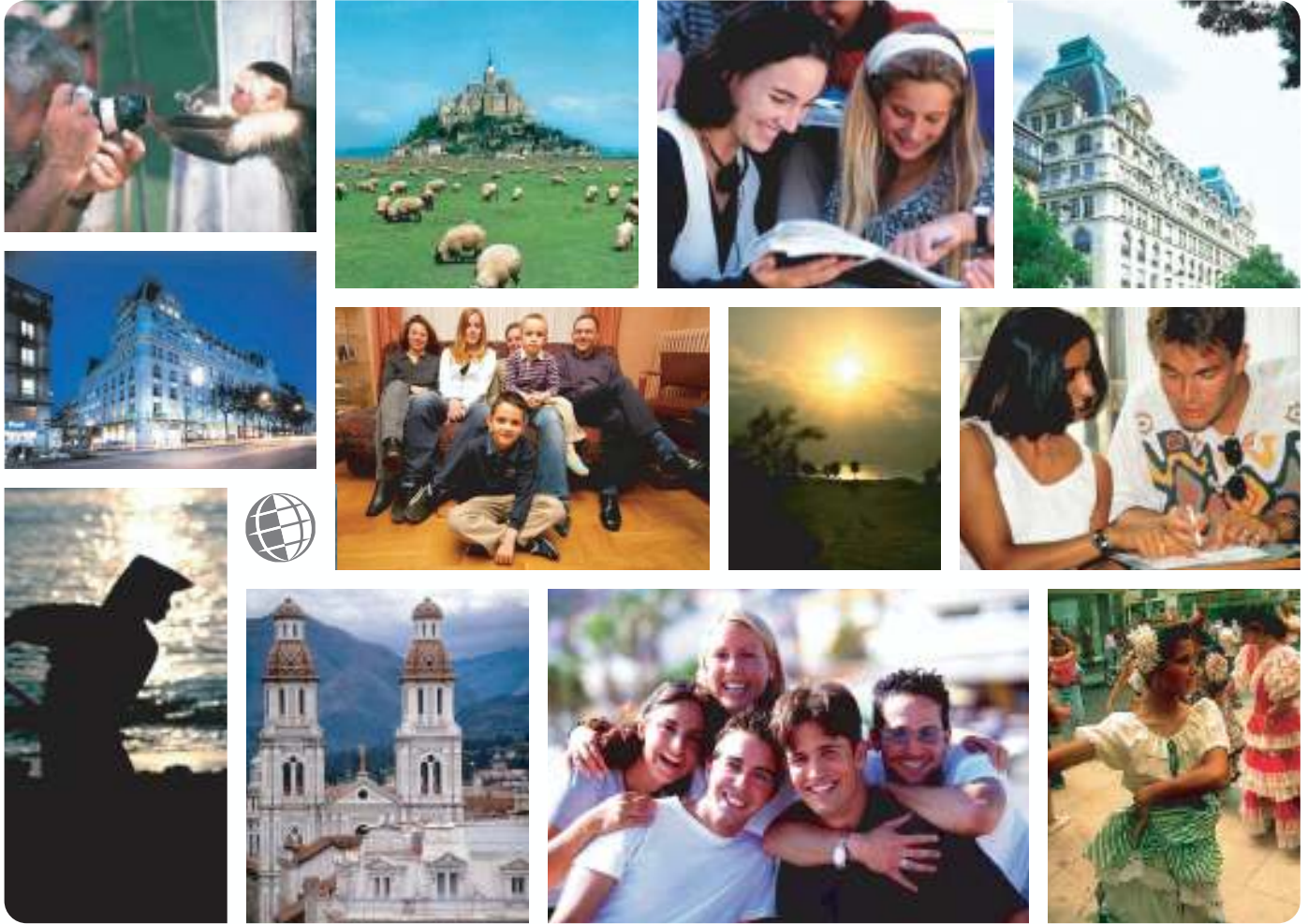


*Live the Language
Learn the Culture*

Foreign Language and Cultural Immersion Since 1968

NATIONAL REGISTRATION CENTER FOR STUDY ABROAD



Portugal

For more information please visit: www.nrcca.com

NRCCA is a proud member of:





National Registration Center for Study Abroad
PO Box 1393 Milwaukee, Wisconsin 53201 USA
Tel: (414) 278-0631 Email: study@nrcca.com

National Registration Center for Study Abroad (NRCSA)

P.O. Box 1393, Milwaukee, WI 53201 USA. Tel. 414 278 0631 Fax. 414 271 8884



Learn the Culture  Live the Language  Since 1968

CENTRAL DE LINGUAS – LISBON, PORTUGAL

ABOUT THE SCHOOL AND THE CITY

Lisbon: Capital of Portugal, Lisbon is its most important city, home to almost 1,000,000 people. Lisbon's situation is a privileged one, on the sea at the extreme west of Europe, and at the mouth of Portugal's largest river, forming an extraordinary harbor. The old and new rub shoulders: wide shady avenues and the streets and alleys of picturesque old districts; monuments and museums together with skyscrapers.

ABOUT THE PROGRAM

The methodology used in the classroom places a strong emphasis on communication skills, and is delivered to the student utilizing a multimedia approach. This approach helps bring the Portuguese language to life for the student.. The method can be described as structural/functional, in that the structure and grammar of the language are taught and absorbed naturally through practical usage. All instruction is given in Portuguese and most classes have different teachers to ensure that the student does not become overly accustomed to one voice or accent. Practice in the language laboratory is strongly encouraged so that the student may speak Portuguese clearly, fluently and with a correct accent.

Classes are continuous and progressive from the student's start date, but apart from beginners who must start on specific dates, a student may start their program on any Monday throughout the year. There are six levels of instruction available: beginner, elementary, pre-elementary, intermediate, pre-advanced, and advanced.

Group Course 15

15 hours per week. The Group Course 15 consists of 3 hours per day for two or more weeks. Oral class work is an important part of the program and includes conversation, dictation, and grammar combined with language lab work. Classes meet in the mornings, or the afternoons. There are 6 or less students per group.

Group Course 30 - Lisbon Only

30 hours per week. The Group Course 30 consists of 6 hours per day for two or more weeks working within the same format as the Group 15 but more intensive in nature. June - September Only.

Language & Gastronomy - Lisbon Only

19 hours per week - 15 hours Group + 4 hours Cooking classes in small groups. This course combines the Group course of 15 hours per week with Central de Linguas's Gastronomy program. Get to know Portuguese cuisine. Typical dishes, wines, sweets and cheeses. Learn how to cook them, do it and enjoy them.

Executive/Special Vocabulary

20 hours per week. The course combines the Group course of 15 hours per week with 5 hours per week of individual instruction and area activities. It is specifically designed for students with speCentral de Linguas language needs.

Teacher Workshop Course

Group 30 hours per week. An intensive Portuguese & cultural activities class specifically designed for native and non-native teachers of Portuguese a Foreign Language in public or private institutions in or outside Portugal.

Brazilian or African Portuguese - Lisbon Only

Tutor 20 hours per week. These speCentral de Linguasized Portuguese courses are available for those who wish to expand their language boundaries. Both consist of 4 hours per day of language instruction in a one-on-one tutorial setting. Specific materials and experienced teachers of Brazilian and African background.

Easter Course - Lisbon & Faro Only

15 hours per week. The course consists of 3 hours per day of language instruction in a group setting of no more than 12 students per class. Easter holiday Cultural topics also included.

ACCOMMODATIONS

Central de Linguas suggests housing in a private home where students can achieve a better knowledge of the language and culture. Students will stay in a clean, comfortable single room with breakfast included. The School can be reached by inexpensive public transportation from all homes. Hotel lodging is available.

SPECIAL ACTIVITIES

Central de Linguas's additional activities include a wide array of orientation and cultural events. A preliminary orientation lecture on how to get around in Portugal is given to all students. Lectures, followed by debates are held on various aspects of life and culture in Portugal. Saturday half-day and afternoon excursions to points of interest.

TO REGISTER:

Complete the NRCSA Preregistration Form or contact the National Registration Center for Study Abroad at 207 E. Buffalo Street, suite 610. P.O. Box 1393, Milwaukee, WI 53201 USA, or by calling (414) 278-0631; by Fax (414) 271-8884.

Check out our website at <http://www.nrcca.com>
or e-mail us at study@nrcca.com

ALL NRCSA PROGRAMS INCLUDE:

- ✓ Foreign language immersion classes
- ✓ Small interactive group and/or one-on-one instruction
- ✓ Culture program integrated into conversation classes, activities
- ✓ Meet-the-People interaction at school, homestays, & community events
- ✓ Orientation covering attractions, how to, health, safety, entertainment
- ✓ Academic assessments, placement-exit tests, Achievement Certificate
- ✓ Lodging (reduced fee if no lodging needed)
- ✓ Meals and/or cooking facilities at most centres
- ✓ Insurance: medical and accident - see below
- ✓ Emergency Hotline staffed 24 hours/day - see below
- ✓ Housing Coordinator familiar with area homestays, apartments, hotels
- ✓ Activity Coordinator facilitates transfers, cultural/social activities, tours
- ✓ Program Director experienced working with foreign participants
- ✓ Qualified, experienced, and certified educators
- ✓ Weekly proficiency goals and progress assessments
- ✓ Planning and Orientation materials
- ✓ International Ambiance, participants from around-the-world welcome
- ✓ Telecom assistance, web/e-mail access, usually on-site
- ✓ Local taxes for included services
- ✓ 24:7 Culture Immersion w/ native speakers: class, homestay, community
- ✓ **ALL NRCSA PROGRAMS INCLUDE the following INSURANCE***

ACCIDENT INSURANCE up to \$10,000 SICKNESS INSURANCE up to \$10,000

EMERGENCY MEDICAL EVACUATION up to \$25,000

EMERGENCY REUNION up to \$5,000

REPATRIATION up to \$7,500

LIFE INSURANCE \$5,000

plus

24 HOUR EMERGENCY WORLDWIDE MULTI-LINGUAL TELEPHONE ASSISTANCE

MANY ALSO OFFER

- ✓ **Tours:** cultural visits, day and weekend fieldtrips
- ✓ **Art:** classes/workshops, craft, dance, theater, fashion, music, photo
- ✓ **Humanities:** culture, area studies, hist, lit, gov't, educ, comm, plus...
- ✓ **Health:** golf, swimming, tennis, diving, skiing, riding, plus...
- ✓ **Special:** vocabulary classes tailored to your professional needs
- ✓ **Lodging:** homestay, apartment, dorm, hotel, special diet
- ✓ **Food:** home cooking, cooking classes, dine-around, wine tasting
- ✓ **Family:** services, daycare, child classes, community services
- ✓ **Teacher:** training, workshops, practicums, practice teaching, ECH
- ✓ **Teen:** camps and youth programs (including experiential)
- ✓ **University:** credit, undergraduate and graduate
- ✓ **Professional:** development credit in many fields, licensure, CEU
- ✓ **Volunteer:** medical, social service, ecology, teach plus...
- ✓ **Internships:** business, media, arts, eco, tourism, computer, plus...
- ✓ **Business:** classes, visits, networking, executive support services
- ✓ **Peer-to-Peer:** share interests, network by profession or hobby
- ✓ **Current Events & Professional Workshops, Holiday Courses**
- ✓ **Distance** educ liaison service, independent studies, research assist
- ✓ **Free** books and course materials. Return at end of studies
- ✓ **Free** airport transfers and internet access
- ✓ **Assessment** reports for attendance, progress, acculturation if needed
- ✓ **Medical:** professional training, law, social work, sciences etc.

** If you have a problem while studying abroad, call the 24 hour hotline! Call Any Time from Anywhere! Medical or travel emergencies, legal or medical or embassy referrals, lost passport or luggage, emergency message relay, coordinating emergency prescription replacement or cash transfer, emergency translations, 24-hour medical monitoring. Problems seldom occur, but when they do, it is nice to know insurance and worldwide assistance are included in your cost for study dates prepaid through NRCSA as reflected on your NRCSA confirmation. Additional optional insurance available upon request. Refer to the certificate for specific terms, conditions and other details regarding benefits, limitations, eligibility and exclusions of this plan. Questions? Contact NRCSA: Tel: 414-278-0631 ... E-Mail: info@nrcca.com ... Web: <http://www.nrcca.com>*

For Questions, Concerns, or Registration, Contact NRCSA
National Registration Center for Study Abroad * Box 1393, Milwaukee WI 53201 USA
Tel 414-278-0631 * Fax 414-271-8884* www.nrcca.com * info@nrcca.com
Since 1968 * Language-Culture Immersion Worldwide * Start Weekly * All Ages * Credit, CEU or Enrichment