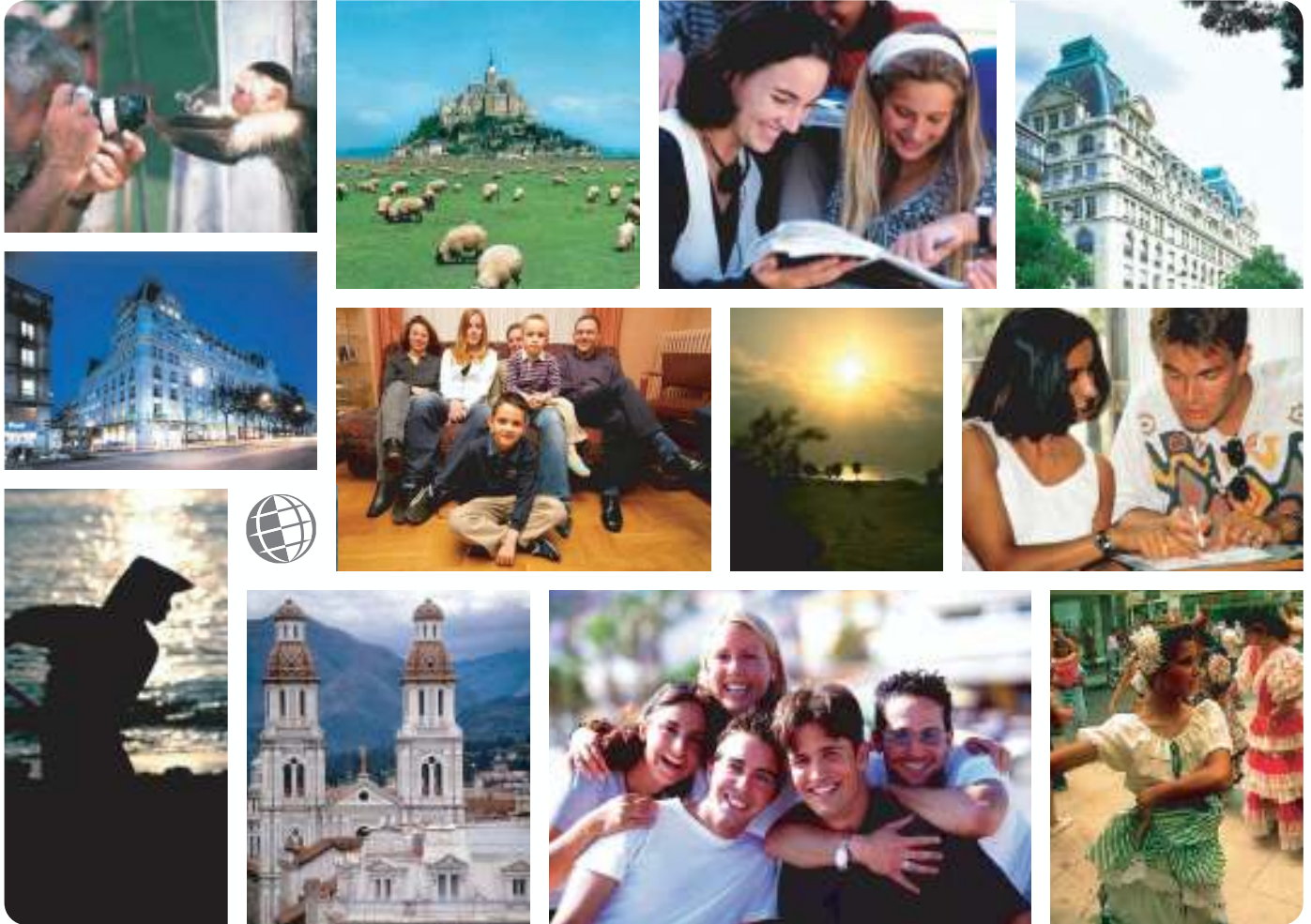


*Live the Language
Learn the Culture*

Foreign Language and Cultural Immersion Since 1968
**NATIONAL REGISTRATION CENTER
FOR STUDY ABROAD**



Spain

For more information please visit: www.nrca.com

NRCSA is a proud member of:



National Registration Center for Study Abroad
PO Box 1393 Milwaukee, Wisconsin 53201 USA
Tel: (414) 278-0631 Email: study@nrca.com

National Registration Center for Study Abroad (NRCSA)

P.O. Box 1393, Milwaukee, WI 53201 USA. Tel. 414 278 0631 Fax. 414 271 8884



Learn the Culture  Live the Language  Since 1968

ENFOREX LANGUAGE SCHOOL – GRANADA, SPAIN

ABOUT THE SCHOOL AND THE CITY

ENFOREX Spanish Language School is an institution founded in 1989, recognized by the Spanish Ministry of Education and by the "Instituto Cervantes", which is the official entity that promotes the Spanish Language and culture throughout the world. Perfection in work and enthusiasm for every task it develops is part of ENFOREX philosophy. ENFOREX is a member of FIYTO, BELTA, NAFSA, ALTO, UNION LATINA, AEEM, AMACFE, and AECAE. The school has been certified by CEELE (Certificate of teaching Spanish as a foreign language), authorized by the department of Spanish language of the University of Alcalá, Madrid, and the Asociación de Español como Recurso Economico.

Granada is a scenic city at the foot of the Sierra Nevada, a relic of a thousand and one nights. The warmest coast in Europe, the "Costa Tropical" can be reached within 45 minutes. The highest mountain of the Iberian Peninsula is also at an arm's distance. Granada, the cradle of the most diverse cultures, was always a beloved city. Romantic 19th century intellectuals lived here, as well as the ancient Greeks, Romans, Phoenicians and the Moorish. Granada is certainly the city in Europe with the most evident traces of the Moor empire. The majesty of the Alhambra Palace dominates the city. The Albaicin, the gypsies' quarter, the Sacromonte with the small rebuilt pubs and Flamenco stages are all witness to a lively past.

ABOUT THE PROGRAM

The school offers 8 levels of study: Initial, Basic, Elementary, Low Intermediate, High Intermediate, Advanced, High Advanced, Proficiency. Students normally upgrade one level every 4 weeks.

The teaching methodology is based on the study of linguistic skills as well as in the study of the socio-cultural aspects of Spanish culture. In the courses the 4 skills of the language are focused on: oral comprehension, reading comprehension, oral expression and written expression, in which the grammar structures needed to reach the communicative competence are studied. To learn a language is to live a language, that is why students need to be immersed into the culture. Spanish culture is always present in classroom instruction.

General Spanish Courses Group 22 or 30 hours per week. General Spanish Courses take place during the whole year with no limit in length. Students may start any Monday of the year except for complete beginners who should start on specific starting dates. Class sizes are small, having an average of 5 students per class and a maximum of 8. Students will have two different teachers every day, making the courses very dynamic

Christmas Course Two weeks of lessons (20 lessons per week) and is designed to accommodate those who wish to utilize their holiday time studying. The course also includes excursions and cultural activities such as visits to typical Spanish Christmas scenes, nativity exhibitions as well as the Epiphany parade. As it is offered in an off-peak period, museums and other sites of interest are often less crowded than at other times of the year. There are always lots of typical Christmas activities in which you can participate that allow a full immersion in Spanish culture and the traditions of the season. We do not close for the Christmas/holiday season. Our schools do observe the 25th of December, the 1st of January and other local/special holidays. Special holidays are set by Provincial and local governments so can be subject to change by location but, in all cases we guarantee you 20 lessons per week.

ACCOMMODATIONS

Homestay: This lodging option will enable the student to have a closer look at the Spanish culture and customs while living everyday life with a well selected Spanish family. Students may choose to have a single or double room and 2 meals daily is included in the cost. 3 meals daily is available at additional cost.

Student Residence: Residences are located in the centre of the city, 5 to 15 minutes from the school. Choose between a single or a double room (subject to availability) and 2 meals daily is included in the cost. This option is available at additional cost.

Student Apartments: This option is available upon request and at additional cost. Price includes bed linen, blanket, access to fully equipped kitchen and laundry room, shared bathroom, Central heating, weekly cleaning of the common areas, water, electricity and gas costs.

Hotels: 3 or 4 star. Normally the hotel will be located less than 5 minutes walk from ENFOREX. This option is available at additional cost.

SPECIAL ACTIVITIES

During the week ENFOREX organizes afternoon activities and excursions such as visits to museums, churches or the typical areas of Marbella & Barcelona which are usually free of charge. On weekends the school organizes full day trips or weekend trips taking students to other cities in Spain at a very low cost.

TO REGISTER:

Complete the NRCSA Preregistration Form or contact the National Registration Center for Study Abroad at 823 North 2nd Street, P.O. Box 1393, Milwaukee, WI 53201 USA, or by calling (414) 278-0631; by Fax (414) 271-8884.

Check out our website at <http://www.nrcsa.com>
or e-mail us at study@nrcsa.com

ALL NRCSA PROGRAMS INCLUDE:

- ✓ Foreign language immersion classes
- ✓ Small interactive group and/or one-on-one instruction
- ✓ Culture program integrated into conversation classes, activities
- ✓ Meet-the-People interaction at school, homestays, & community events
- ✓ Orientation covering attractions, how to, health, safety, entertainment
- ✓ Academic assessments, placement-exit tests, Achievement Certificate
- ✓ Lodging (reduced fee if no lodging needed)
- ✓ Meals and/or cooking facilities at most centres
- ✓ Insurance: medical and accident - see below
- ✓ Emergency Hotline staffed 24 hours/day - see below
- ✓ Housing Coordinator familiar with area homestays, apartments, hotels
- ✓ Activity Coordinator facilitates transfers, cultural/social activities, tours
- ✓ Program Director experienced working with foreign participants
- ✓ Qualified, experienced, and certified educators
- ✓ Weekly proficiency goals and progress assessments
- ✓ Planning and Orientation materials
- ✓ International Ambiance, participants from around-the-world welcome
- ✓ Telecom assistance, web/e-mail access, usually on-site
- ✓ Local taxes for included services
- ✓ 24:7 Culture Immersion w/ native speakers: class, homestay, community
- ✓ **ALL NRCSA PROGRAMS INCLUDE the following INSURANCE***

ACCIDENT INSURANCE up to \$10,000 SICKNESS INSURANCE up to \$10,000

EMERGENCY MEDICAL EVACUATION up to \$25,000

EMERGENCY REUNION up to \$5,000

REPATRIATION up to \$7,500

LIFE INSURANCE \$5,000

plus

24 HOUR EMERGENCY WORLDWIDE MULTI-LINGUAL TELEPHONE ASSISTANCE

MANY ALSO OFFER

- ✓ **Tours:** cultural visits, day and weekend fieldtrips
- ✓ **Art:** classes/workshops, craft, dance, theater, fashion, music, photo
- ✓ **Humanities:** culture, area studies, hist, lit, gov't, educ, comm, plus...
- ✓ **Health:** golf, swimming, tennis, diving, skiing, riding, plus...
- ✓ **Special:** vocabulary classes tailored to your professional needs
- ✓ **Lodging:** homestay, apartment, dorm, hotel, special diet
- ✓ **Food:** home cooking, cooking classes, dine-around, wine tasting
- ✓ **Family:** services, daycare, child classes, community services
- ✓ **Teacher:** training, workshops, practicums, practice teaching, ECH
- ✓ **Teen:** camps and youth programs (including experiential)
- ✓ **University:** credit, undergraduate and graduate
- ✓ **Professional:** development credit in many fields, licensure, CEU
- ✓ **Volunteer:** medical, social service, ecology, teach plus...
- ✓ **Internships:** business, media, arts, eco, tourism, computer, plus...
- ✓ **Business:** classes, visits, networking, executive support services
- ✓ **Peer-to-Peer:** share interests, network by profession or hobby
- ✓ **Current Events & Professional Workshops, Holiday Courses**
- ✓ **Distance** educ liaison service, independent studies, research assist
- ✓ **Free** books and course materials. Return at end of studies
- ✓ **Free** airport transfers and internet access
- ✓ **Assessment** reports for attendance, progress, acculturation if needed
- ✓ **Medical:** professional training, law, social work, sciences etc.

** If you have a problem while studying abroad, call the 24 hour hotline! Call Any Time from Anywhere! Medical or travel emergencies, legal or medical or embassy referrals, lost passport or luggage, emergency message relay, coordinating emergency prescription replacement or cash transfer, emergency translations, 24-hour medical monitoring. Problems seldom occur, but when they do, it is nice to know insurance and worldwide assistance are included in your cost for study dates prepaid through NRCSA as reflected on your NRCSA confirmation. Additional optional insurance available upon request. Refer to the certificate for specific terms, conditions and other details regarding benefits, limitations, eligibility and exclusions of this plan. Questions? Contact NRCSA: Tel: 414-278-0631 ... E-Mail: info@nrcca.com ... Web: <http://www.nrcca.com>*

For Questions, Concerns, or Registration, Contact NRCSA
National Registration Center for Study Abroad * Box 1393, Milwaukee WI 53201 USA
Tel 414-278-0631 * Fax 414-271-8884* www.nrcca.com * info@nrcca.com
Since 1968 * Language-Culture Immersion Worldwide * Start Weekly * All Ages * Credit, CEU or Enrichment